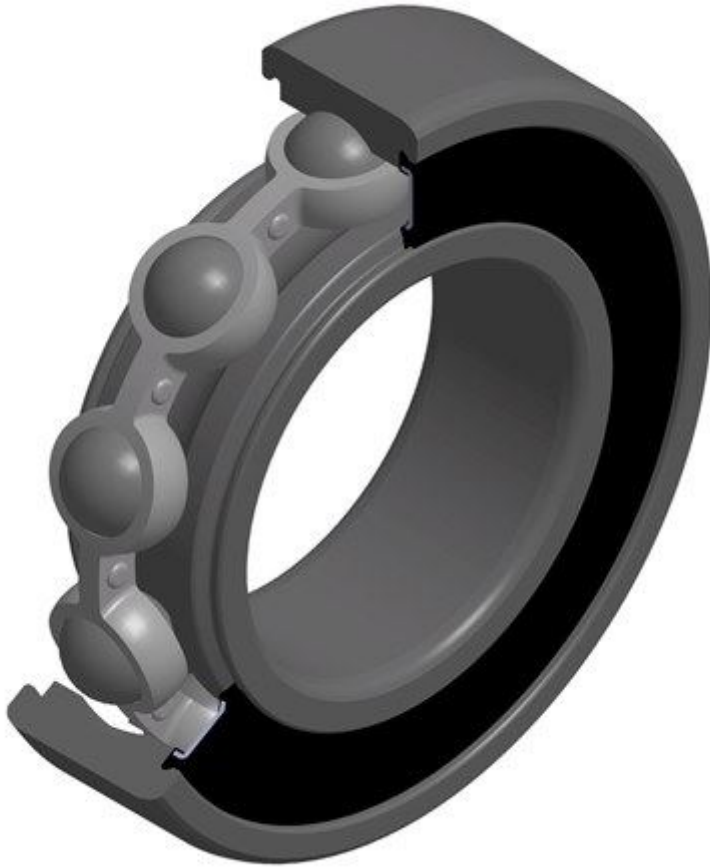


608LBCNM/2A



608LBCNM/2A Bearing dimensions and specification in NTN catalogue:

B	7 mm
D	22 mm
d	8 mm
f0	12.5
Mass	0.01 kg
Brand	NTN
Da max	20 mm
da max	12.2 mm
da min	10 mm
ra max	0.3 mm

NTN 608LBCNM/2A Single Row Deep Groove Ball Bearings

Bearing Data Sheet:

rs min	0.3 mm
Nlim (oil)	37,000 rpm
Nlim (grease)	32,000 rpm
Dynamic load, C	3.35 kN
Static load, C0	1.4 kN
Fatigue limit load, Cu	0.06 kN
Radial clearance class	CM
Max operating temperature, Tmax	110 °C
Min operating temperature, Tmin	-25 °C